



Spurgeon Avenue, SE19 | Offers In Excess Of £875,000

020 8702 9333

crystalpalace@pedderproperty.com

pedder
We live local



In General

- Four bedroom detached house
- No onward chain
- Generous rear garden
- Integrated garage
- Off street parking for three cars
- Private road
- Original features

In Detail

A four bedroom detached house positioned on a small quiet residential road in Crystal Palace.

Tucked away on a peaceful and desirable private road, this substantial four bedroom detached house presents a rare opportunity to acquire a spacious family home in one of areas sought after residential enclaves.

Built in 1936, the property combines classic architectural charm with generous proportions, offering approximately 1,783 sq ft of balanced accommodation. Ideal for those seeking a home to personalise, it provides a strong foundation for modern long-term family living.

The ground floor features two bright and versatile reception rooms, well suited for both everyday living and entertaining. Additional benefits include a downstairs cloakroom and understairs storage, ensuring practicality throughout.

To the rear, a large, well maintained garden provides ample space for relaxation or family activities, while the front of the property features a driveway with parking for up to three cars and an integrated garage. Expansive windows throughout the home allow natural light to flow freely, creating a welcoming and airy atmosphere.

Upstairs, four comfortable bedrooms and a family bathroom offer flexible accommodation for growing families. Retained period features — including original parquet flooring and stained glass windows — add warmth and character, enhancing the home’s timeless appeal.

While some areas would benefit from updating, the property’s solid structure, generous layout, and desirable location make it an exceptional opportunity for those looking to create a truly individual family residence.

Offered to the market chain free, this impressive home enjoys close proximity to local schools, green spaces, and convenient transport links, making it a superb choice for families seeking both tranquillity and connectivity in the area.

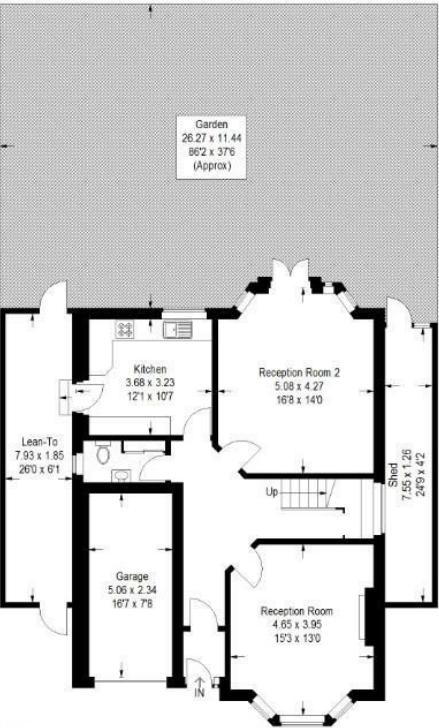
EPC: D | Council Tax Band: TBC



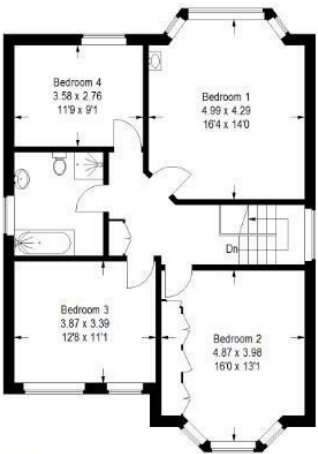
Floorplan

Spurgeon Avenue, SE19

Approximate Gross Internal Area (Excluding Outbuilding & Lean To)
153.9 sq m / 1656 sq ft
Garage = 11.8 sq m / 127 sq ft
Total = 165.7 sq m / 1783 sq ft

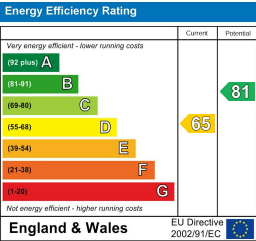


Ground Floor



First Floor

Copyright www.pedderproperty.com © 2025
These plans are for representation purposes only as defined by RICS - Code of Measuring Practice.
Not drawn to Scale. Windows and door openings are approximate. Please check all dimensions,
shapes and compass bearings before making any decisions reliant upon them.



Pedder Property Ltd trading as Pedder for themselves and for the vendor/landlord of this property whose agents they are, give notice that (1) these particulars do not constitute any part of an offer or contract, (2) all statements contained within these particulars are made without responsibility on the part of Pedder or the vendor/landlord, (3) whilst made in good faith, none of the statements contained within these particulars are to be relied upon as a statement of representation or fact, (4) any intending purchaser/tenant must satisfy him/herself by inspection or otherwise as to the correctness of each of the statements contained within these particulars, (5) the vendor/landlord does not make or give either Pedder or any person in their employment any authority to make or give representation or warranty whatsoever in relation to this property.